

non-threaded CAPS



Applicable Specs.: MS-90376-R, NAS-813, NAS-831, MS-25178

EC Series

Caplug No.	Dimensions										Packaging				Caplug No.
	To Fit Thread Size	A		B		C		D		Standard Carton		Mini Pak Quantity			
		in	mm	in	mm	in	mm	in	mm	Shipping Wt. (Approx.) lbs	kgs		No. of Pieces		
EC-4	1/4	.246	6.25	.48	12.19	.50	12.70	.31	7.87	6	2.7	5000	1000	EC-4	
EC-M8	M8	.309	7.85	.55	13.97	.56	14.22	.37	9.40	8	3.6	5000	1000	EC-M8	
EC-5	5/16	.308	7.82	.55	13.97	.56	14.22	.37	9.40	8	3.6	5000	1000	EC-5	
EC-6	3/8	.369	9.37	.62	15.75	.50	12.70	.43	10.92	7	3.1	5000	1000	EC-6	
EC-8	1/2	.480	12.19	.74	18.80	.50	12.70	.54	13.72	10	4.5	5000	1000	EC-8	
EC-9	9/16	.551	14.00	.78	19.81	.44	11.18	.61	15.49	10	4.5	5000	1000	EC-9	
EC-10	5/8	.605	15.37	.84	21.34	.50	12.70	.66	16.89	12	5.4	5000	1000	EC-10	
EC-12	3/4	.720	18.29	.97	24.64	.50	12.70	.77	19.68	14	6.3	5000	1000	EC-12	
EC-14	7/8	.850	20.83	1.13	28.70	.50	12.70	.90	22.99	18	8.1	5000	1000	EC-14	
EC-16	1	.973	24.71	1.22	30.99	.50	12.70	1.03	26.29	10	4.5	2500	500	EC-16	
EC-18	1 1/8	1.093	27.76	1.33	33.78	.56	14.22	1.15	29.35	13	5.8	2500	500	EC-18	
EC-19	1 3/16	1.188	30.18	1.40	35.56	.56	14.22	1.23	31.24	14	6.3	2500	500	EC-19	
EC-20	1 1/4	1.231	31.27	1.46	37.09	.56	14.22	1.30	33.05	17	7.6	2500	500	EC-20	
EC-22	1 3/8	1.340	34.04	1.59	40.39	.56	14.22	1.41	35.81	17	7.6	2500	500	EC-22	
EC-23	1 7/16	1.428	36.27	1.65	41.91	.56	14.22	1.46	37.08	8	3.6	1000	200	EC-23	
EC-24	1 1/2	1.463	37.16	1.70	43.18	.56	14.22	1.53	38.94	17	7.6	2500	500	EC-24	
EC-25	1 9/16	1.549	39.34	1.73	43.94	.50	12.70	1.59	40.39	17	7.6	2500	500	EC-25	
EC-26	1 5/8	1.613	40.97	1.91	48.51	.56	14.22	1.71	43.43	15	6.8	1000	200	EC-26	
EC-28	1 3/4	1.715	43.56	1.95	49.53	.56	14.22	1.79	45.47	13	5.8	1000	200	EC-28	
EC-32	2	1.965	49.91	2.22	56.39	.56	14.22	2.04	51.82	13	5.8	1000	200	EC-32	
EC-36	2 1/4	2.215	56.26	2.43	61.72	.60	15.24	2.29	58.17	15	6.8	1000	200	EC-36	
EC-40	2 1/2	2.456	62.38	2.68	68.07	.62	15.75	2.52	64.01	17	7.6	1000	200	EC-40	
EC-44	2 3/4	2.720	69.09	2.96	68.32	.60	15.24	2.81	71.42	11	4.9	500	100	EC-44	
EC-48	3	2.960	75.18	3.23	82.05	.60	15.24	3.05	77.47	13	5.8	500	100	EC-48	
EC-64	4	3.940	100.08	4.16	105.67	1.00	25.40	4.00	101.60	10	4.5	200	40	EC-64	
EC-80	5	4.944	125.58	5.12	130.05	1.25	31.75	5.00	127.00	11	4.9	150	30	EC-80	

HC Series

Caplug No.	Dimensions										Packaging				Caplug No.
	A		B		Shipping Wt. (Approx.)		No. of Pieces	Mini Pak Quantity							
	in	mm	in	mm	lbs	kgs									
HC-4	.320	8.13	.629	15.98	10	4.5	10000	1000	HC-4						
HC-6	.445	11.30	.771	19.58	12	5.4	10000	1000	HC-6						
HC-7	.660	16.76	.825	20.96	4	1.8	5000	1000	HC-7						
HC-8	.575	14.61	.880	22.35	7	3.2	5000	1000	HC-8						
HC-10	.700	17.78	1.056	26.82	8	3.6	5000	1000	HC-10						
HC-12	.830	21.08	1.183	30.05	10	4.5	5000	1000	HC-12						

FCO Series

Caplug No.	Dimensions										Packaging				Caplug No.
	To Fit Thread Size	To Fit Hex Size	A		B		C		Standard Carton		Mini Pak Quantity				
	in	mm	in	mm	in	mm	in	mm	Shipping Wt. (Approx.) lbs	kgs		No. of Pieces			
FCO-40	9/16-18	11/16	.671	17.04	.786	19.96	.590	14.99	18	8.2	6000	1000	FCO-40		
FCO-60	11/16-16	13/16	.792	20.12	.928	23.57	.680	17.27	17	7.7	4000	800	FCO-60		
FCO-80	13/16-16	15/16	.916	23.27	1.074	27.28	.840	21.34	10	4.5	2500	500	FCO-80		
FCO-100	1-14	1 1/8	1.098	27.89	1.287	32.69	.940	23.88	8	3.6	1500	300	FCO-100		
FCO-120	1 3/16-12	1 3/8	1.355	34.42	1.576	40.03	1.030	26.16	8	3.6	1000	200	FCO-120		
FCO-160	1 7/16-12	1 5/8	1.586	40.28	1.859	47.22	1.110	28.19	20	9.1	900	180	FCO-160		
FCO-200	1 11/16-12	1 7/8	1.832	46.53	2.148	54.56	1.110	28.19	10	4.5	700	140	FCO-200		



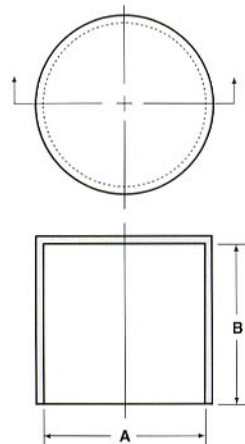
CAPS non-threaded

SC Series Sleeve Caps for Tube Ends

Series SC Sleeve Caps are designed to fit outside diameters of tubing sizes listed with a snug friction grip. Available in 59 different O.D.s and lengths, the SC Series is ideal for capping and protecting both threaded and non-threaded tubing or rod ends. They also make excellent masks for painting, plating or grit-blasting operations.



MATERIAL: Low Density Polyethylene
COLOR*: Red



EXPANDED

non-threaded CAPS



SC Series

Applicable Specs.: MIL-C-5501/9, MIL-C-52078, NAS-844

Caplug No.	Dimensions				Packaging			Mini Pak Quantity	Caplug No.
	A		B		Standard Carton				
	in	mm	in	mm	Shipping Wt. (Approx.)		No. of Pieces		
				lbs	kgs				
SC-5/64**	.078	1.98	.50	12.70	2	0.9	5000	1000	SC-5/64**
SC-3/32	.094	2.38	.59	14.99	2	0.9	5000	1000	SC-3/32
SC-1/8	.125	3.18	.59	14.99	3	1.3	5000	1000	SC-1/8
SC-5/32	.156	3.97	.56	14.22	3	1.3	5000	1000	SC-5/32
SC-3/16-5	.188	4.76	.35	8.89	3	1.3	5000	1000	SC-3/16-5
SC-3/16-10	.188	4.76	.59	14.99	4	1.8	5000	1000	SC-3/16-10
SC-3/16-16	.188	4.76	1.00	25.40	5	2.2	5000	1000	SC-3/16-16
SC-7/32	.219	5.56	.75	19.05	5	2.2	5000	1000	SC-7/32
SC-1/4-4	.250	6.35	.22	5.59	2	0.9	5000	1000	SC-1/4-4
SC-1/4-7	.250	6.35	.44	11.18	3	1.3	5000	1000	SC-1/4-7
SC-1/4-14	.250	6.35	.88	22.35	6	2.7	5000	1000	SC-1/4-14
SC-1/4-16	.250	6.35	1.00	25.40	6	2.7	5000	1000	SC-1/4-16
SC-9/32	.281	7.14	.75	19.05	5	2.2	5000	1000	SC-9/32
SC-5/16	.313	7.94	.88	22.35	7	3.1	5000	1000	SC-5/16
SC-3/8	.375	9.53	.88	22.35	8	3.6	5000	1000	SC-3/8
SC-7/16-8	.438	11.11	.50	12.70	6	2.7	5000	1000	SC-7/16-8
SC-7/16-14	.438	11.11	.88	22.35	10	4.5	5000	1000	SC-7/16-14
SC-1/2-8	.500	12.70	.50	12.70	7	3.1	5000	1000	SC-1/2-8
SC-1/2-14	.500	12.70	.88	22.35	11	4.9	5000	1000	SC-1/2-14
SC-1/2-24	.500	12.70	1.50	38.10	8	3.6	2500	500	SC-1/2-24
SC-9/16-9	.563	14.29	.56	14.22	9	4.0	5000	1000	SC-9/16-9
SC-9/16-14	.563	14.29	.88	22.35	14	6.3	5000	1000	SC-9/16-14
SC-5/8	.625	15.88	.88	22.35	14	6.3	5000	1000	SC-5/8
SC-11/16	.688	17.46	.88	22.35	15	6.8	5000	1000	SC-11/16
SC-3/4	.750	19.05	.88	22.35	17	7.6	5000	1000	SC-3/4
SC-25/32	.781	19.84	1.00	25.40	19	8.6	5000	1000	SC-25/32
SC-13/16	.813	20.64	.88	22.35	18	8.1	5000	1000	SC-13/16
SC-7/8	.875	22.23	.88	22.35	20	9.0	5000	1000	SC-7/8
SC-15/16	.938	23.81	1.00	25.40	11	4.9	2500	500	SC-15/16
SC-1	1.000	25.40	1.00	25.40	15	6.8	2500	500	SC-1
SC-1-1/16	1.063	26.99	1.00	25.40	18	8.1	2500	500	SC-1-1/16
SC-1-1/8	1.125	28.58	1.00	25.40	15	6.8	2500	500	SC-1-1/8
SC-1-3/16	1.188	30.16	1.00	25.40	17	7.6	2500	500	SC-1-3/16
SC-1-1/4	1.250	31.75	1.00	25.40	15	6.8	2000	400	SC-1-1/4
SC-1-5/16	1.313	33.34	1.00	25.40	9	4.0	1000	200	SC-1-5/16
SC-1-3/8	1.375	34.92	1.00	25.40	9	4.0	1000	200	SC-1-3/8
SC-1-1/2	1.500	38.10	1.00	25.40	10	4.5	1000	200	SC-1-1/2
SC-1-5/8	1.625	41.28	1.00	25.40	10	4.5	1000	200	SC-1-5/8
SC-1-3/4	1.750	44.45	1.00	25.40	13	5.8	1000	200	SC-1-3/4
SC-1-7/8	1.875	47.63	1.00	25.40	13	5.8	1000	200	SC-1-7/8
SC-1-29/32	1.906	48.41	1.00	25.40	15	6.8	1000	200	SC-1-29/32
SC-2	2.000	50.80	.88	22.35	12	5.4	1000	200	SC-2
SC-2-1/8	2.125	53.98	1.00	25.40	8	3.6	500	100	SC-2-1/8
SC-2-1/4	2.250	57.15	.88	22.35	14	6.3	500	100	SC-2-1/4
SC-2-3/8	2.375	60.33	.88	22.35	9	4.0	500	100	SC-2-3/8
SC-2-1/2	2.500	63.50	.88	22.35	11	4.9	500	100	SC-2-1/2
SC-2-9/16	2.563	65.10	1.00	25.40	12	5.4	500	100	SC-2-9/16
SC-2-5/8	2.625	66.68	1.00	25.40	13	5.8	500	100	SC-2-5/8
SC-2-3/4	2.750	69.85	1.00	25.40	13	5.8	500	100	SC-2-3/4
SC-3	3.000	76.20	1.00	25.40	13	6.3	450	90	SC-3
SC-3-1/8	3.125	79.38	1.38	35.05	9	4.0	250	50	SC-3-1/8
SC-3-5/16	3.313	84.14	1.00	25.40	10	4.5	400	100	SC-3-5/16
SC-3-1/2	3.500	88.90	1.38	35.05	10	4.5	250	50	SC-3-1/2
SC-3-5/8	3.625	92.08	1.38	35.05	11	4.9	250	50	SC-3-5/8
SC-3-3/4	3.750	95.25	1.38	35.05	12	5.4	200	40	SC-3-3/4
SC-4	4.000	101.60	1.38	35.05	13	5.8	250	50	SC-4
SC-4-1/8	4.125	104.78	1.50	38.10	7	3.1	120	24	SC-4-1/8
SC-5-1/8	5.125	130.18	1.63	41.40	9	4.0	100	20	SC-5-1/8
SC-5-1/4	5.250	133.36	1.80	45.72	12	5.4	50	N/A	SC-5-1/4

** SC-5/64 is POE material (Polyolefin Elastomer)



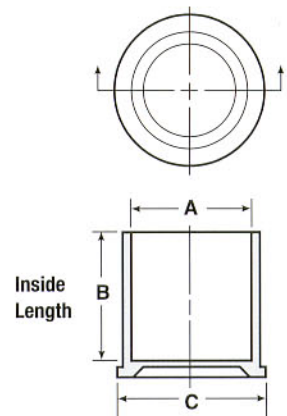
CAPS non-threaded

RC Series Caps for Threaded Connectors

Originated for the automotive and air conditioning industries, Series RC Caps are suitable for a multitude of applications. They can be installed to fit threaded or smooth cylindrical surfaces.



MATERIAL: Low Density Polyethylene
COLOR*: Red

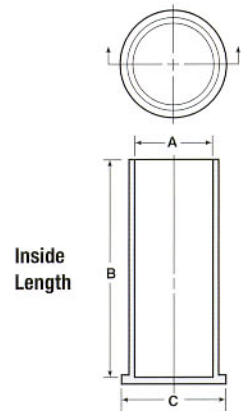


RCL Series Caps for Long Threaded Connectors

Series RCL Caps are ideal for protecting threaded or smooth cylindrical surfaces. Originally designed for use on hydraulic double threaded bulkhead fittings, they are especially suitable where greater longitudinal protection is required.



MATERIAL: Low Density Polyethylene
COLOR*: Red

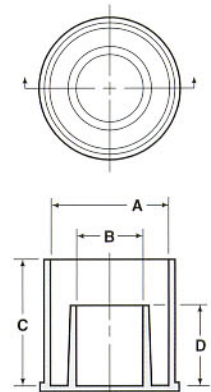


FC Series Caps for Flareless Tube and Nut Assemblies

Featuring a "cap within a cap" design, Series FC closures can be easily applied to flareless hydraulic tube and nut assemblies. As the FC Cap is pushed on the nut, the "outer cap" conforms to the hex shape of the nut while the "inner cap" covers the tube and sleeve inside the nut to hold the assembly firmly in place.



MATERIAL: Low Density Polyethylene
COLOR*: Red



EXPANDED

non-threaded CAPS



RC Series

Caplug No.	Dimensions								Packaging				Caplug No.
	To Fit Thread Size	A		B		C		Standard Carton		Mini Pak Quantity			
		in	mm	in	mm	in	mm	Shipping Wt. (Approx.) lbs	kgs		No. of Pieces		
RC-6	3/8	0.37	9.50	0.47	11.94	0.60	15.24	8	3.6	5000	1000	RC-6	
RC-7	7/16	0.42	10.74	0.59	14.99	0.57	14.48	8	3.6	5000	1000	RC-7	
RC-8	1/2	0.50	12.67	0.55	13.97	0.73	18.54	11	5.0	5000	1000	RC-8	
RC-9	9/16	0.56	14.25	0.48	12.19	0.79	20.07	12	5.4	5000	1000	RC-9	
RC-10	5/8	0.61	15.49	0.84	21.34	0.76	19.30	15	6.8	5000	1000	RC-10	
RC-11	11/16	0.67	16.97	0.84	21.34	0.83	21.08	17	7.6	5000	1000	RC-11	
RC-11-7	11/16	0.67	17.12	0.47	11.94	0.92	23.37	16	7.3	5000	1000	RC-11-7	
RC-11-A	-	0.68	17.22	0.88	22.35	0.84	21.34	14	6.4	4500	900	RC-11-A	
RC-12	3/4	0.74	18.67	0.88	22.35	0.90	22.86	18	8.1	5000	1000	RC-12	
RC-12-10	3/4	0.74	18.75	0.65	16.51	0.98	24.13	17	7.7	5000	1000	RC-12-10	
RC-13	13/16	0.81	20.60	0.56	14.22	1.04	26.42	18	8.1	5000	1000	RC-13	
RC-14	7/8	0.86	21.84	0.84	21.34	1.02	25.91	21	9.4	5000	1000	RC-14	
RC-14-12	7/8	0.86	21.84	0.75	19.05	1.11	28.19	19	8.6	4000	800	RC-14-12	
RC-16	1	1.00	25.35	0.65	16.51	1.23	31.24	15	6.6	3000	600	RC-16	
RC-17	1 1/16	1.05	26.59	0.89	22.61	1.21	30.74	12	5.4	2500	500	RC-17	
RC-19	1 3/16	1.19	30.12	0.77	19.56	1.42	36.07	15	6.8	2000	400	RC-19	
RC-21	1 5/16	1.31	33.30	0.90	22.86	1.54	39.12	11	5.0	1000	200	RC-21	
RC-23	1 7/16	1.44	36.47	0.70	17.78	1.67	42.42	10	4.5	1000	200	RC-23	
RC-26	1 5/8	1.63	41.22	0.95	24.13	1.86	47.24	14	6.4	1000	200	RC-26	
RC-27	1 11/16	1.69	42.82	0.70	17.78	1.92	48.77	12	5.4	1000	200	RC-27	
RC-30	1 7/8	1.88	47.83	1.08	27.43	2.12	53.85	15	6.8	800	160	RC-30	
RC-40	2 1/2	2.51	63.70	1.30	33.02	2.75	69.85	12	5.4	400	80	RC-40	
RC-M12	12mm	0.47	11.99	0.47	11.94	0.70	17.78	10	4.5	5000	1000	RC-M12	
RC-M18	18mm	0.70	17.75	1.00	25.40	0.93	23.62	15	6.8	3000	600	RC-M18	

RCL Series

Caplug No.	Dimensions								Packaging				Caplug No.
	To Fit Thread Size	A		B		C		Standard Carton		Mini Pak Quantity			
		in	mm	in	mm	in	mm	Shipping Wt. (Approx.) lbs	kgs		No. of Pieces		
RCL-2	5/16	0.308	7.82	1.24	31.50	.46	11.68	10	4.5	5000	1000	RCL-2	
RCL-3	3/8	0.370	9.40	1.24	31.50	.52	13.21	12	5.4	5000	1000	RCL-3	
RCL-4	7/16	0.429	10.90	1.33	33.78	.58	14.73	14	6.4	5000	1000	RCL-4	
RCL-5	1/2	0.490	12.45	1.33	33.78	.64	16.26	16	7.3	5000	1000	RCL-5	
RCL-6	9/16	0.552	14.02	1.41	35.82	.70	17.78	19	8.6	5000	1000	RCL-6	
RCL-8	3/4	0.739	18.77	1.56	39.63	.88	22.35	15	6.8	2500	500	RCL-8	
RCL-8L	3/4	0.739	18.77	2.66	67.56	.88	22.35	20	9.1	2000	400	RCL-8L	
RCL-9	M-20(.787)	0.791	20.09	1.56	39.63	.91	23.11	19	8.6	2500	500	RCL-9	
RCL-10	7/8	0.861	21.87	1.70	43.18	1.01	25.66	20	9.1	2500	500	RCL-10	
RCL-10L	7/8	0.861	21.87	2.66	67.56	1.01	25.66	17	7.7	1500	300	RCL-10L	
RCL-11	.995	0.995	25.27	1.80	45.72	1.15	29.21	14	6.4	1500	300	RCL-11	
RCL-12	1 1/16	1.049	26.64	1.89	48.01	1.19	30.23	12	5.4	1000	200	RCL-12	
RCL-12L	1 1/16	1.049	26.64	3.00	76.20	1.19	30.23	15	6.8	900	180	RCL-12L	
RCL-14	1 1/8	1.135	28.83	2.12	53.85	1.25	31.75	19	8.6	1500	300	RCL-14	
RCL-14-50	1 1/8	1.135	28.83	3.11	78.99	1.33	33.78	19	8.6	1000	200	RCL-14-50	
RCL-16	1 5/16	1.299	32.99	1.89	48.01	1.44	36.58	13	5.8	1000	200	RCL-16	
RCL-18	-	1.459	37.06	2.24	56.90	1.61	40.89	25	11.3	500	100	RCL-18	
RCL-20	1 5/8	1.611	40.92	1.92	48.77	1.76	44.71	11	5.0	500	100	RCL-20	
RCL-24	1 7/8	1.861	47.27	1.94	49.28	2.01	51.06	13	5.9	500	100	RCL-24	

FC Series

Caplug No.	Dimensions										Packaging				Caplug No.
	To Fit Tube Size	A		B		C		D		Standard Carton		Mini Pak Quantity			
		in	mm	in	mm	in	mm	in	mm	Shipping Wt. (Approx.) lbs	kgs		No. of Pieces		
FC-2	1/8	.39	9.91	.17	4.32	.58	14.73	.40	10.16	7	3.1	5000	1000	FC-2	
FC-3	3/16	.46	11.68	.24	6.10	.63	16.00	.41	10.41	8	3.6	5000	1000	FC-3	
FC-4	1/4	.59	14.99	.30	7.62	.77	19.56	.52	13.21	12	5.4	5000	1000	FC-4	
FC-5	5/16	.65	16.51	.37	9.40	.81	20.57	.53	13.46	14	6.3	5000	1000	FC-5	
FC-6	3/8	.72	18.29	.41	10.41	.81	20.57	.54	13.72	19	8.6	5000	1000	FC-6	
FC-8	1/2	.91	23.11	.57	14.48	.86	21.84	.54	13.72	14	6.3	2500	500	FC-8	
FC-10	5/8	1.04	26.42	.67	17.02	.99	25.15	.64	16.26	18	8.1	2500	500	FC-10	
FC-12	3/4	1.30	33.02	.83	21.08	1.00	25.40	.64	16.26	10	4.5	1000	200	FC-12	
FC-16	1	1.56	39.63	1.07	27.18	1.10	27.94	.63	16.00	13	5.8	1000	200	FC-16	
FC-20	1 1/4	2.08	52.83	1.32	33.53	1.10	27.94	.62	15.75	20	9.0	1000	200	FC-20	
FC-24	1 1/2	2.36	59.95	1.56	39.63	1.08	27.43	.62	15.75	12	5.4	500	100	FC-24	
FC-28	1 3/4	2.76	70.11	1.83	46.48	1.14	28.96	.69	17.53	18	8.1	500	100	FC-28	
FC-32	2	3.00	76.20	2.06	52.33	1.17	29.72	.63	16.00	11	4.9	250	50	FC-32	